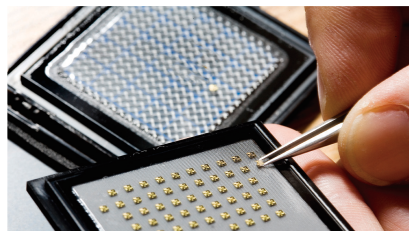


Engineering for Professionals Programs at a Glance



Johns Hopkins Engineering for Professionals (EP) offers part-time graduate degree and certificate programs that enable working professionals to advance their skills, knowledge, and value.

EP faculty, students, alumni, and partners form a community of experts that prepares students to become leaders in technology and innovation and to apply that expertise to their organizations' success.

- Classes held on weekday evenings and Saturdays
- Four fully online degree programs—Bioinformatics, Computer Science, Systems Engineering, and Environmental Planning and Management—plus more than 60 online courses offered across all 15 programs
- More than 2,000 enrolled students
- Over 400 faculty members from the JHU Whiting School of Engineering, the JHU Applied Physics Laboratory, and many private and government organizations
- More than 450 graduate courses offered
- Accredited by the Middle States Commission on Higher Education
- More than 5,000 degrees awarded in the last decade

Get complete course descriptions and more details about prerequisites, degree requirements, online and classroom courses, concentrations, schedules, campus locations, and more at www.ep.jhu.edu.

EDUCATION CENTERS

Aberdeen: Higher Education and Conference Center @ HEAT

Baltimore: Homewood Campus

Elkridge: Dorsey Center

Laurel: Applied Physics Laboratory (APL)

Rockville: Montgomery County Campus

Southern Maryland: Southern Maryland Higher Education Center (California, MD)

Washington, DC: Washington, DC Center

Arlington, VA: Crystal City Center*

Online: More than 60 courses offered online

GRADUATE PROGRAM AREAS

Applied and Computational Mathematics

Applied Biomedical Engineering

Applied Physics

Bioinformatics[†]

Chemical and Biomolecular Engineering

Civil Engineering

Computer Science

Electrical and Computer Engineering

Environmental Engineering, Science, and Management

Information Assurance

Information Systems Engineering

Materials Science and Engineering

Mechanical Engineering

Systems Engineering

Technical Management

PARTNERS

BAE Systems

Lockheed Martin

MITRE Corporation

Northrop Grumman

Raytheon

U.S. Army Corps of Engineers

U.S. Naval Academy–VGEP

U.S. Naval Air Systems Command

U.S. Naval Sea Systems Command

U.S. Naval Test Pilot School

*The JHU Whiting School of Engineering is certified to operate in the Commonwealth of Virginia by the State Council of Higher Education for Virginia.

[†]Jointly offered with The Krieger School of Arts and Sciences Advanced Academic Programs.

Graduate Program	Locations
Applied and Computational Mathematics	<ul style="list-style-type: none"> • APL • Dorsey Center • Higher Education and Conference Center @ HEAT • Montgomery County Campus • Southern Maryland Higher Education Center
Applied Biomedical Engineering	<ul style="list-style-type: none"> • APL • Dorsey Center • Homewood Campus
Applied Physics	<ul style="list-style-type: none"> • APL • Dorsey Center
Bioinformatics	<ul style="list-style-type: none"> • APL • Montgomery County Campus • Online
Chemical and Biomolecular Engineering	<ul style="list-style-type: none"> • Homewood Campus
Civil Engineering	<ul style="list-style-type: none"> • Dorsey Center • Homewood Campus
Computer Science	<ul style="list-style-type: none"> • APL • Dorsey Center • Montgomery County Campus • Online
Electrical and Computer Engineering	<ul style="list-style-type: none"> • APL • Dorsey Center • Montgomery County Campus • Online
Environmental Engineering, Science, and Management	<ul style="list-style-type: none"> • APL • Dorsey Center • Homewood Campus • Montgomery County Campus • Washington, DC Center • Online
Information Assurance	<ul style="list-style-type: none"> • APL • Dorsey Center • Montgomery County Campus
Information Systems Engineering	<ul style="list-style-type: none"> • APL • Dorsey Center • Montgomery County Campus • Online
Materials Science and Engineering	<ul style="list-style-type: none"> • APL • Dorsey Center • Homewood Campus
Mechanical Engineering	<ul style="list-style-type: none"> • APL • Dorsey Center • Homewood Campus
Systems Engineering	<ul style="list-style-type: none"> • APL • Crystal City Center • Dorsey Center • Higher Education and Conference Center @ HEAT • Montgomery County Campus • Southern Maryland Higher Education Center • Online
Technical Management	<ul style="list-style-type: none"> • APL • Dorsey Center • Montgomery County Campus • Southern Maryland Higher Education Center

GRADUATE PROGRAMS

EP graduate students constitute one of the nation's largest student bodies in continuing engineering education at the master's degree level. Graduate programs leading to master's degrees are offered at eight locations and online as shown in the table on the left.

Note: Graduate students may take courses at any Hopkins location listed in the table. Please note that not all courses are offered at all locations. **Locations offering the full program are indicated in bold**, with the remaining locations offering selected courses.

EDUCATION CENTERS

- **Applied Physics Laboratory (APL)**, Laurel, MD
- **Crystal City Center**, Arlington, VA
- **Dorsey Student Services Center**, Elkridge, MD
- **Higher Education and Conference Center @ HEAT**, Aberdeen, MD
- **Homewood Campus**, Baltimore, MD
- **Montgomery County Campus**, Rockville, MD
- **Southern Maryland Higher Education Center**, California, MD
- **Washington, DC Center**, Washington, DC
- **Online**

